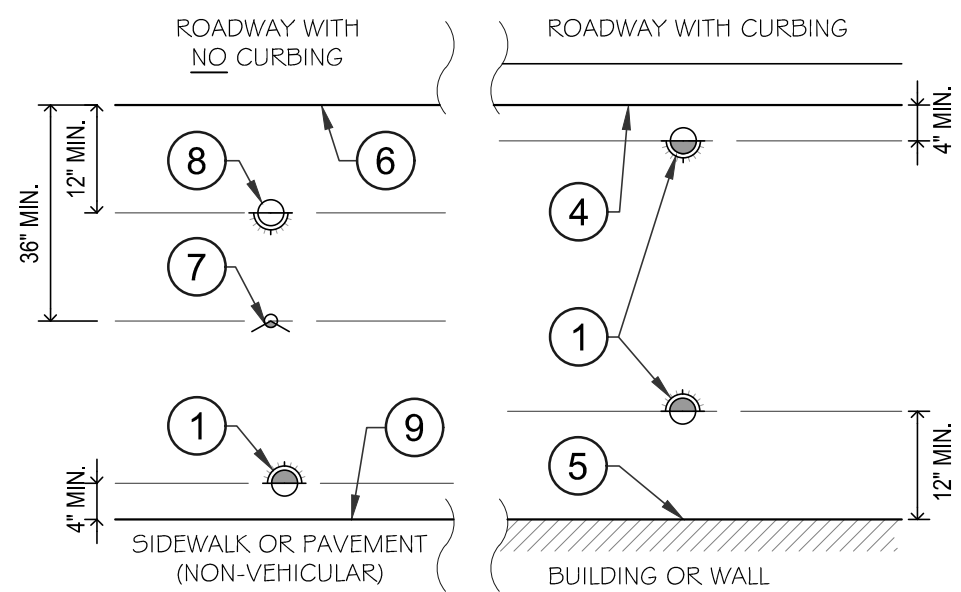


LAYOUT FOR SHRUB SPRAY HEADS ON RISERS

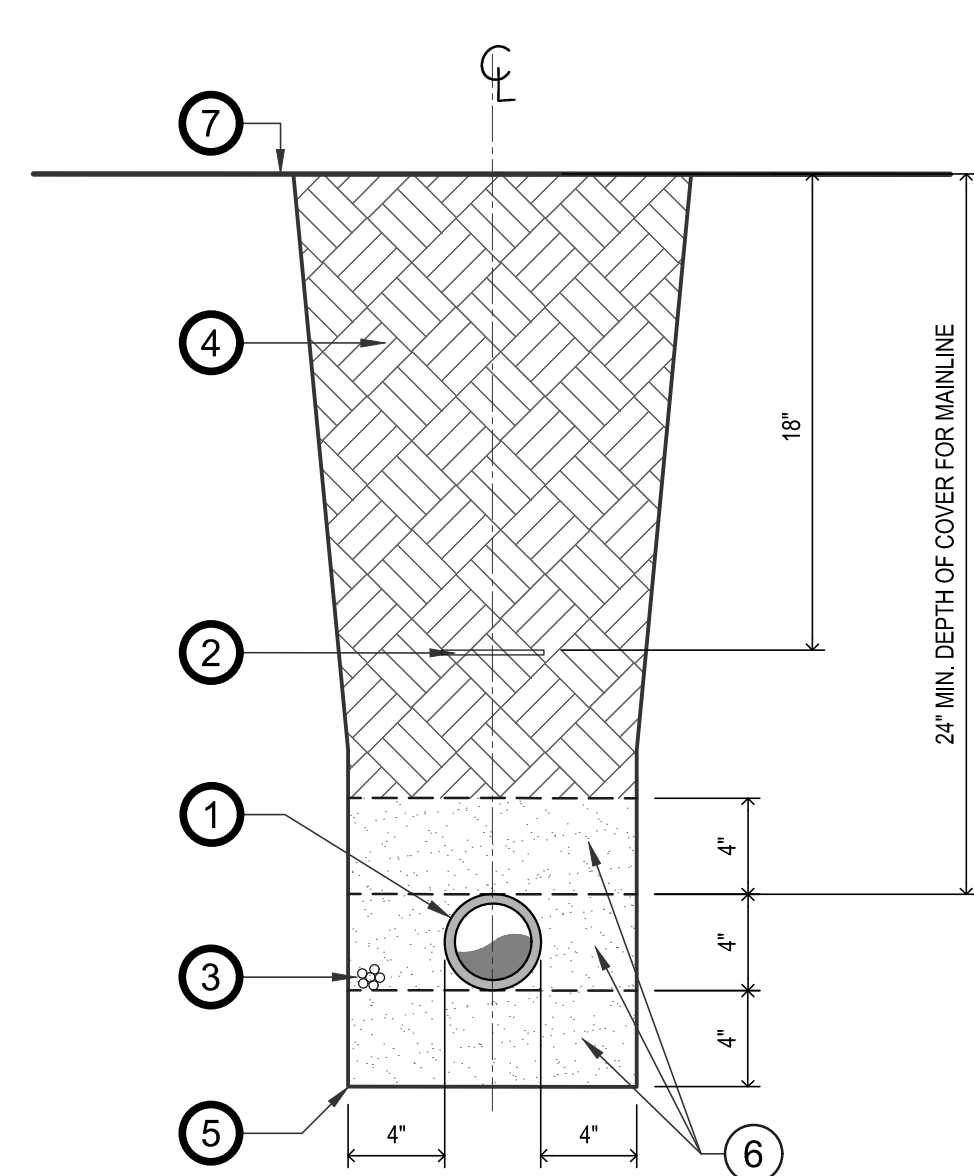


LAYOUT FOR LAWN SPRAYS

- 1 SPRAY HEAD: SHRUB SPRAY, POP-UP OR ROTOR ON RISER (SEE PLANS & SCHEDULE FOR TYPE)
- 2 SPRAY HEAD SHALL BE PLACED A MINIMUM OF 6" WITHIN SHRUB MASS
- 3 TYPICAL SHRUB
- 4 BACK OF CURB, SIDEWALK, OR EDGE OF PAVEMENT (NON-VEHICULAR)
- 5 OUTSIDE EDGE OF WALL
- 6 EDGE OF PAVEMENT (VEHICULAR USE)
- 7 ROTORS SHALL BE INSTALLED 36" FROM EDGE OF PAVEMENT WHEN ROADWAY HAS NO CURB.
- 8 TURF SPRAY SHALL BE INSTALLED 12" FROM EDGE OF PAVEMENT WHEN ROADWAY HAS NO CURB.
- 9 EDGE OF WALK OR NON-VEHICULAR USE PAVEMENT

## 1 IRRIGATION HEAD LAYOUT DETAIL

NTS

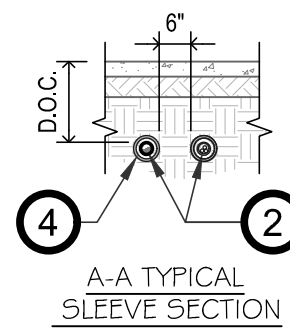


- 1 IRRIGATION MAIN LINE, SIZE PER PLAN
- 2 IDENTIFICATION TAPE: APPROVED MAGNETIC TAPE SHALL BE INSTALLED DIRECTLY ABOVE IRRIGATION WATER MAIN. TAPE SHALL NOT BE DEEPER THAN 18" BELOW FINISHED GRADE WITH A MINIMUM OF 6" ABOVE WATER MAIN. CONTRACTOR SHALL CONTACT OWNER/OWNERS REPRESENTATIVE FOR APPROVAL.
- 3 LOW VOLTAGE DIRECT BURIAL IRRIGATION CONTROLLER WIRE (UF RATED) PER SPECIFICATIONS, TAPE & BUNDLE CONTROLLER WIRE @ 10" INTERVALS MAX.
- 4 SALVAGED EXCAVATED FILL COMPACTED TO ORIGINAL DENSITY, WITH ALL SHARP OBJECTS, ROCKS, STONES OF 3/4" DIAMETER OR GREATER REMOVED PRIOR TO BACK FILLING (TYP.). COMPACTED PER NOTES/SPECIFICATIONS
- 5 BOTTOM OF TRENCH
- 6 INITIAL BACKFILL & BEDDING TO BE CLEAN, COARSE SAND PLACED IN 4" LIFTS AND MECHANICALLY COMPACTED TO 95% PROCTOR
- 7 FINISHED GRADE

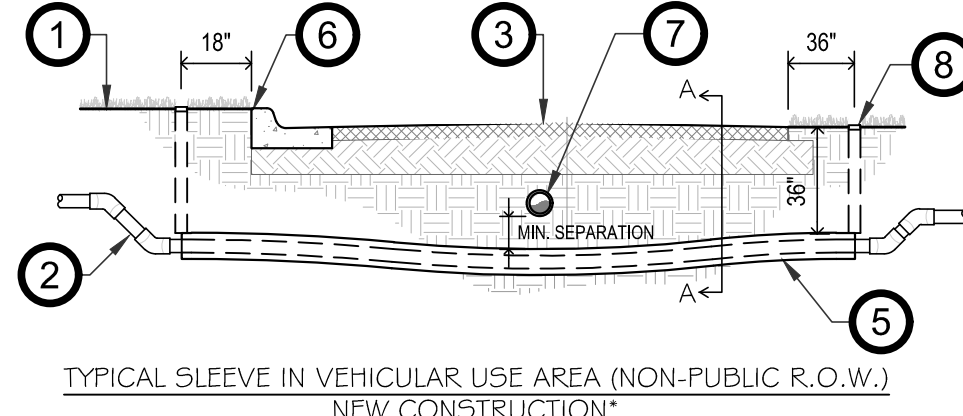
## 2 MAINLINE TRENCH DETAIL

N.T.S.

- NOTE:
- 1 SLEEVES WITHIN EXISTING ROADWAYS OR PAVEMENT (THAT ARE NOT RESURFACED AS PART OF THIS PROJECT) SHALL BE INSTALLED BY DIRECTIONAL BORE WITH NO DAMAGE TO EXISTING PAVEMENT.
  - 2 SLEEVES SHALL BE A MINIMUM OF 2" I.D. AND AT LEAST 2 SIZES LARGER THAN THE "CASED PIPE" CARRIED IN THE SLEEVE. SIZES NOTED ON PLAN ARE MINIMUM.
  - 3 SLEEVES:  
2" TO 4" SHALL BE PVC SCHEDULE 40  
6" AND GREATER SHALL BE PVC CLASS 200



A-A TYPICAL SLEEVE SECTION

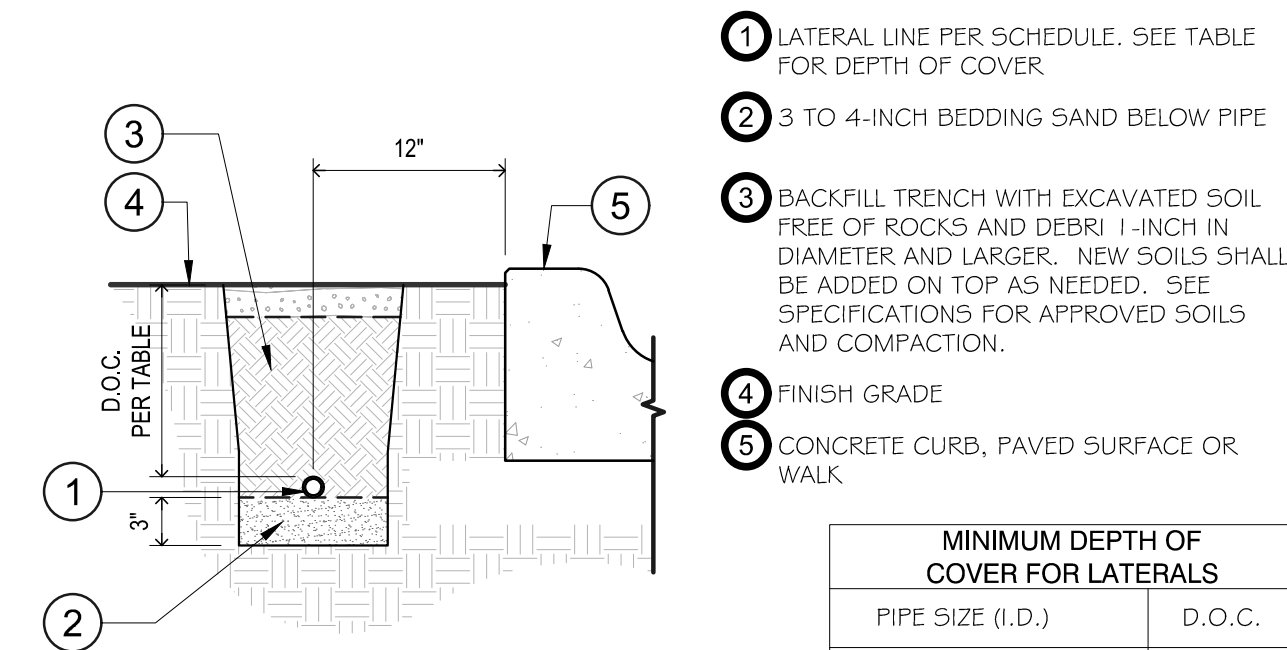


TYPICAL SLEEVE IN VEHICULAR USE AREA (NON-PUBLIC R.O.W.) NEW CONSTRUCTION

- 1 FINISH GRADE
- 2 IRRIGATION PIPE (MAINLINE, LATERAL, OR WIRE CONDUIT), MAINTAIN A MINIMUM OF 6" (HORIZONTAL) SEPARATION BETWEEN SLEEVES.
- 3 PAVED VEHICULAR USE AREA (IE. ROADS, PARKING, DRIVEWAYS)
- 4 SECTION VIEW OF SLEEVES, MAINTAIN A MINIMUM OF 6" (HORIZONTAL) SEPARATION BETWEEN ALL SLEEVES.
- 5 SLEEVES BELOW VEHICULAR USE AREAS SHALL HAVE A MINIMUM DEPTH OF COVER OF 36".
- 6 BACK OF CURB
- 7 UTILITY PIPE CONFLICT, IRRIGATION SLEEVES SHALL BE INSTALLED WITH THE MINIMUM PIPE SEPARATIONS AS PER THE FLORIDA BUILDING CODE, AND ALL LOCAL APPLICABLE CODES/ORDINANCES. CONTRACTOR SHALL VERIFY ALL UTILITIES WITH THE GOVERNING AGENCIES PRIOR TO COMMENCING WORK.
- 8 SLEEVE MARKER, 1" ABOVE FINISH GRADE (2" VERT. PVC PIPE, W/ YELLOW CAP), SHALL BE USED WHEN COVERING EMPTY OR SPARE SLEEVES.

## 3 IRRIGATION ROAD & DRIVEWAY SLEEVES

NTS

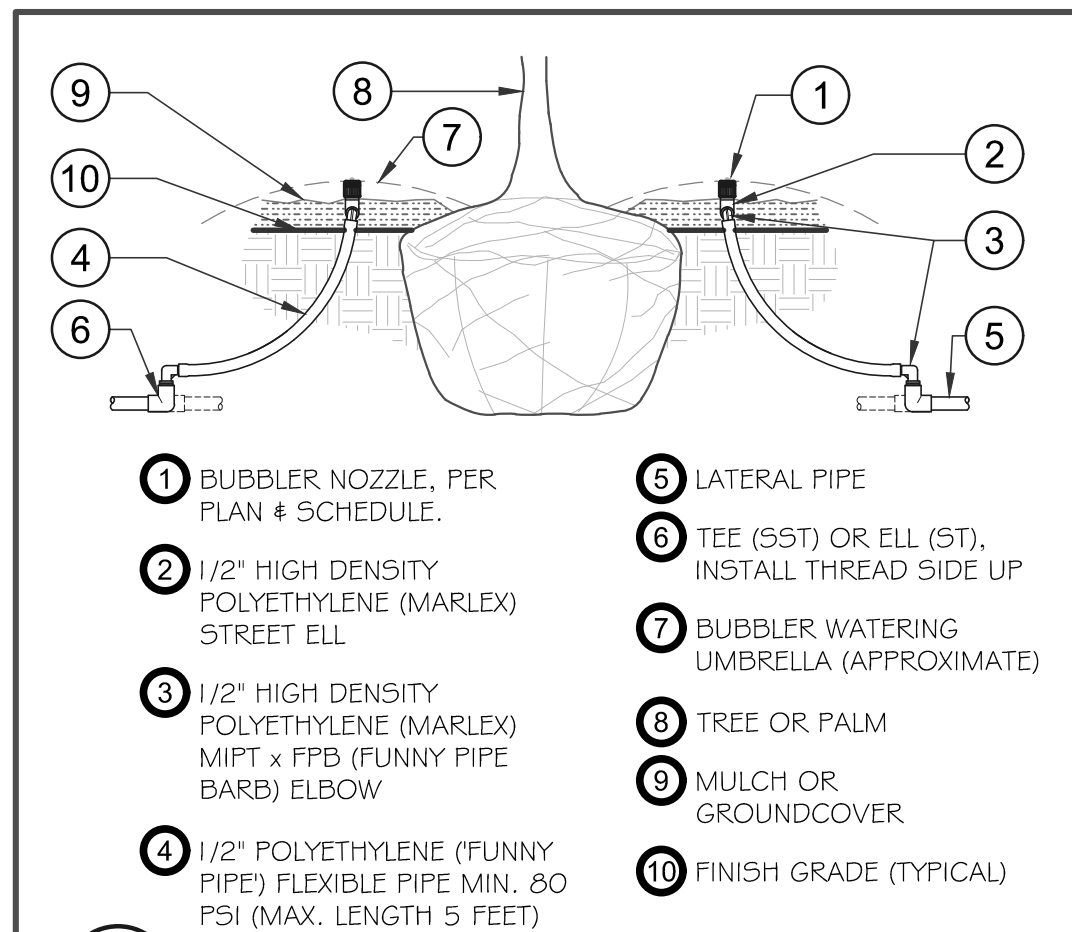


MINIMUM DEPTH OF COVER FOR LATERALS	
PIPE SIZE (I.D.)	D.O.C.
3/4" TO 1-1/4"	12"
1-1/4" TO 2-1/2"	18"
3-INCH OR GREATER	24"

- NOTES:
- 1 SNAKE PIPE HORIZONTALLY IN TRENCH TO ALLOW ONE (1) FOOT OF EXPANSION AND CONTRACTION PER 100 FEET OF STRAIGHT RUN.
  - 2 CONTRACTOR SHALL REMOVE AND DISPOSE OF ALL EXCAVATED ROCK AND DEBRIS UNSUITABLE FOR BACKFILL.
  - 3 SOD AREAS SHALL RECEIVE 2" OF 80/20 (SAND/SOIL) MIX ON TOP OF TRENCH. INSTALL NEW ST AUGUSTINE FLORATAM SOD OR BERMUDA SOD AS DIRECTED BY OWNER'S REPRESENTATIVE.
  - 4 PLANTING AREAS SHALL BE RESTORED TO THEIR PREVIOUS STATE, BACKFILL TOP 8-INCHES OF TRENCH WITH 80/20 PLANTING SOIL AND REPLACE ANY SHRUBS OR GROUND COVER DAMAGED DURING CONSTRUCTION.
  - 5 MAINTAIN 8" HORIZONTAL SEPARATION BETWEEN LATERALS AND MAINLINES, 4" HORIZONTAL SEPARATION BETWEEN PARALLEL LATERAL PIPES, AND 8" HORIZONTAL SEPARATION BETWEEN PIPES OF OTHER TRADES.

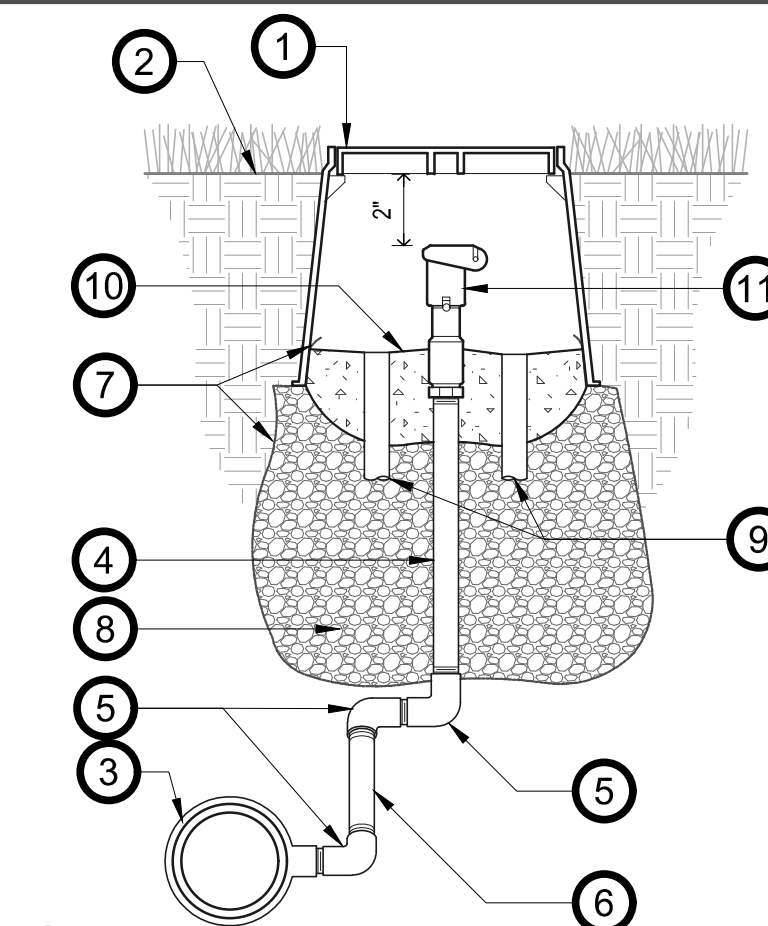
## 4 LATERAL PIPE TRENCH DETAIL

NTS



## 5 ADJUSTABLE FLOOD BUBBLER

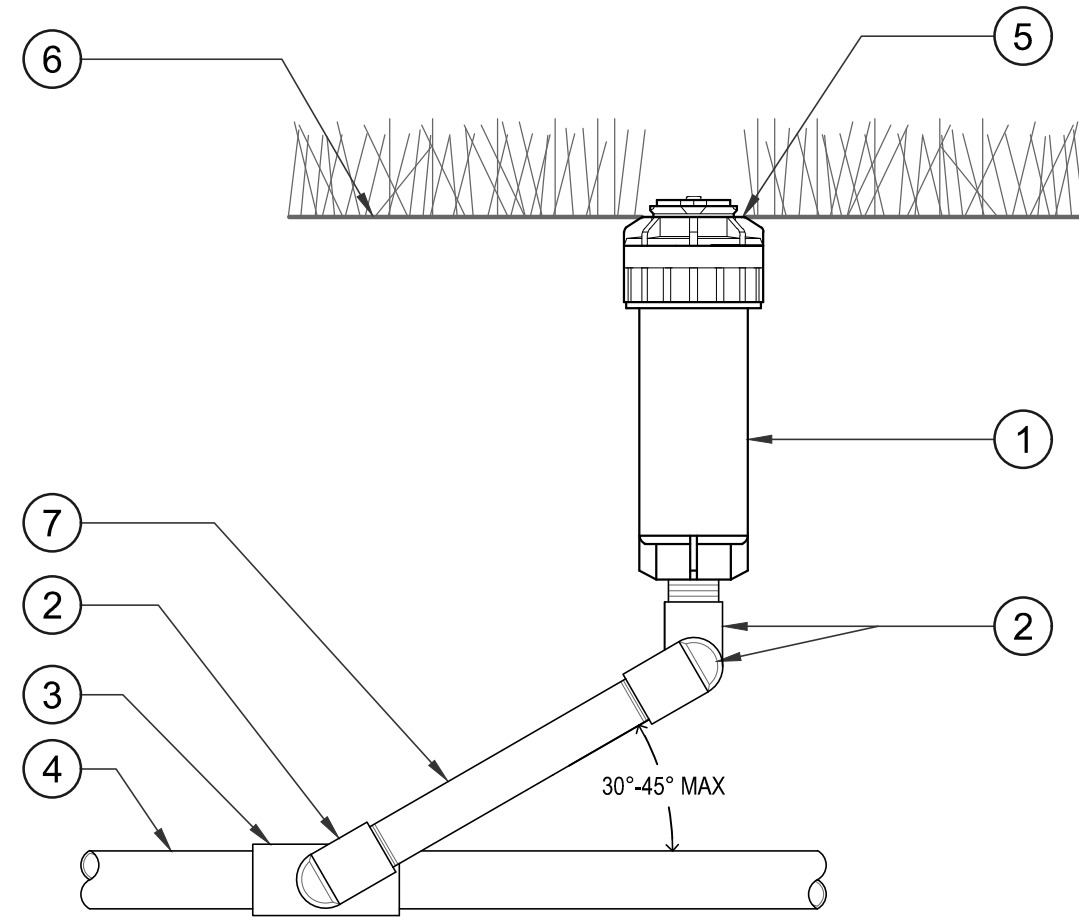
NTS



## 6 QUICK COUPLING DETAIL

- 1 VALVE BOX & COVER (CARSON 0910-10)
- 2 FINISH GRADE
- 3 MAIN LINE (TYP.) W/ PVC SCH 40 TEE OR ELL
- 4 PVC SCH 80 NIPPLE (LENGTH AS REQUIRED) - DO NOT INSTALL MALE ADAPTERS.
- 5 PVC SCH 40 STREET ELL
- 6 PVC SCH 80 NIPPLE (LENGTH AS REQUIRED) INSTALL ANGLED 30° TO 45° FROM MAIN LINE
- 7 FILTER FABRIC EXTEND ABOVE CONC.
- 8 3/4" GRAVEL WRAPPED IN FILTER FABRIC, MIN. 12" DEEP
- 9 PVC SCH 40 - 1" DRAIN PIPES, FLUSH WITH TOP OF CONCRETE
- 10 POURED CONCRETE MIN. 4" DEPTH. SLOPE CONCRETE SURFACE AWAY FROM VALVE AND TOWARDS DRAIN PIPES.
- 11 QUICK-COUPLING VALVE (PER SCHEDULE). ON 2 PIECE MODEL INSTALL UPPER PIECE OVER CONCRETE TO ALLOW FOR SERVICING UPON CONCRETE CURING.

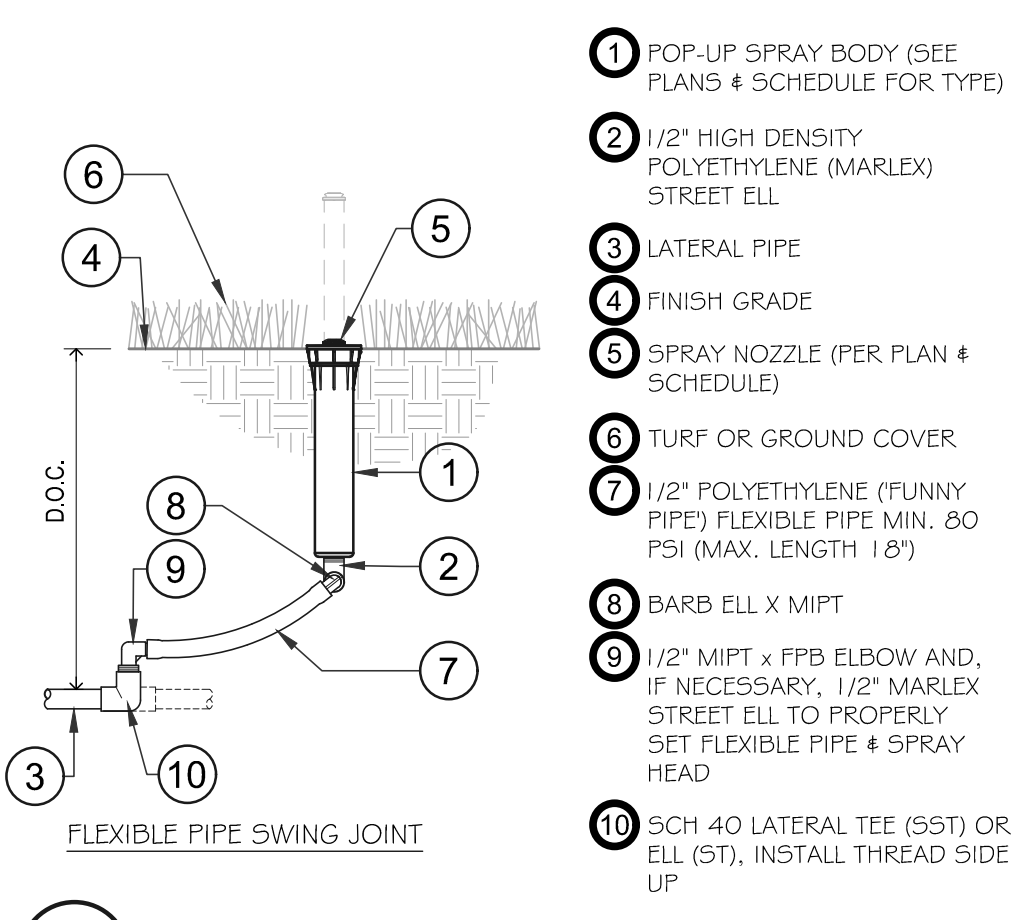
1" 1/2" = 1'-0"



## 7 3/4" TURF ROTOR DETAIL

NTS

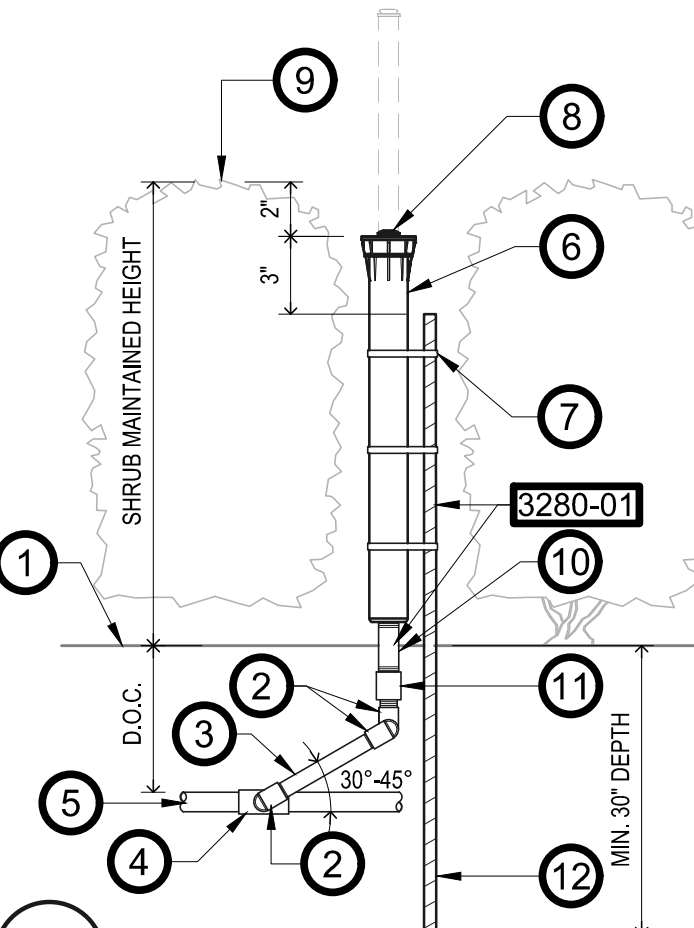
- 1 NEW OR RELOCATED ROTOR (ROTOR TYPE TO MATCH EXISTING ROTORS, NOZZLES BASED ON ANGLES)
- 2 3/4" HIGH DENSITY POLYETHYLENE (MARLEX) STREET ELL
- 3 SCH 40 LATERAL TEE (SST) OR ELL (ST), INSTALL THREAD OUTLET SIDEWAYS
- 4 LATERAL PIPE, PER PLAN
- 5 INSTALL FLUSH WITH FINISH GRADE
- 6 FINISH GRADE
- 7 3/4" SCH 80 NIPPLE (LENGTH AS REQUIRED)



## 9 4" & 6" POP-UP DETAIL

NTS

- 1 POP-UP SPRAY BODY (SEE PLANS & SCHEDULE FOR TYPE)
- 2 1/2" HIGH DENSITY POLYETHYLENE (MARLEX) STREET ELL
- 3 LATERAL PIPE
- 4 FINISH GRADE
- 5 SPRAY NOZZLE (PER PLAN & SCHEDULE)
- 6 TURF OR GROUND COVER
- 7 1/2" POLYETHYLENE (FUNNY PIPE) FLEXIBLE PIPE MIN. 80 PSI (MAX. LENGTH 18')
- 8 BARB ELL X MIPT
- 9 1/2" MIPT x FPB ELBOW AND, IF NECESSARY, 1/2" MARLEX STREET ELL TO PROPERLY SET FLEXIBLE PIPE & SPRAY HEAD
- 10 SCH 40 LATERAL TEE (SST) OR ELL (ST), INSTALL THREAD SIDE UP

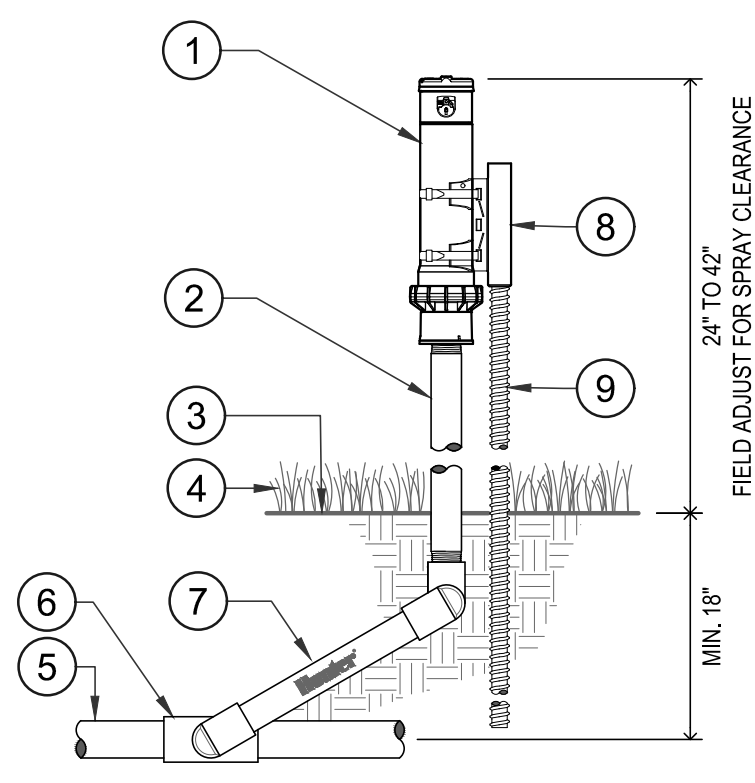


## 10 SHRUB SPRAY ON FIXED RISER 12" POP-UP

1" 1/2" = 1'-0"

- 1 FINISH GRADE
- 2 1/2" HIGH DENSITY POLYETHYLENE (MARLEX) STREET ELL
- 3 SCH 80 NIPPLE (LENGTH AS REQUIRED)
- 4 SCH 40 LATERAL TEE (SST) OR ELL (ST), INSTALL THREAD OUTLET SIDEWAYS
- 5 LATERAL PIPE
- 6 POP-UP SPRAY BODY (SEE PLANS & SCHEDULE FOR TYPE)
- 7 BLACK NYLON TIE STRAPS (TOTAL OF 3 PER RISER)
- 8 SPRAY NOZZLE (PER PLAN & SCHEDULE)
- 9 SHRUBS (REFER TO PLANTING PLAN & SCHEDULE FOR SHRUB MAINTAINED HEIGHT)
- 10 PVC UVR ("BROWNLINER") SCH 80 NIPPLE (LENGTH AS REQUIRED)
- 11 SCH 40 THREADED COUPLER
- 12 #3 REBAR (LENGTH AS REQUIRED)

NOTE: CONTRACTOR SHALL PROVIDE MANUFACTURER'S CUT SHEETS IF USING PRE-MANUFACTURED SWING JOINTS, FOR APPROVAL PRIOR TO ORDERING.



## 8 SHRUB ROTOR ON RISER WITH SUB-GRADE LATERAL

NTS

- 1 SHRUB ROTOR & NOZZLE PER PLAN
- 2 PVC SCH. 80 THREADED RISER
- 3 FINISHED GRADE TYP.
- 4 ADJACENT LANDSCAPE
- 5 LATERAL PER PLAN
- 6 LATERAL FITTING PER PLAN & SCHEDULE
- 7 PREMANUFACTURED SWING ARM (HUNTER HSJ OR APPROVED EQUAL)
- 8 HUNTER STAKING KIT
- 9 1/2" REBAR, LENGTH AS REQUIRED